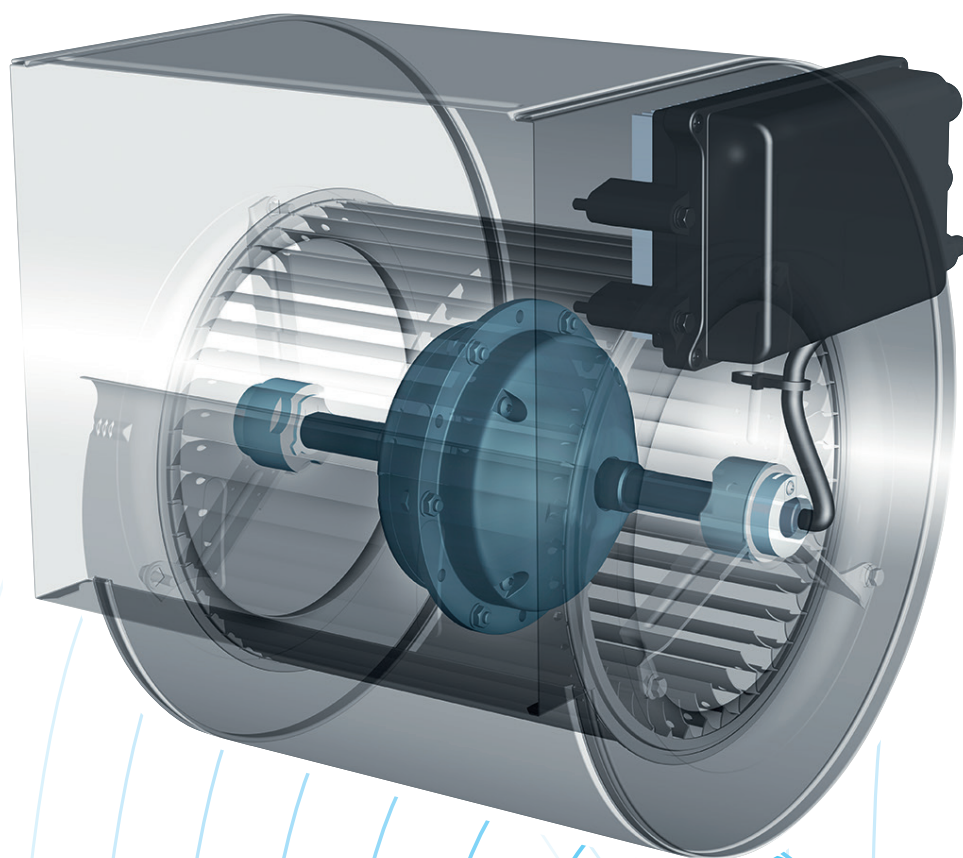


DDMP

Compact efficiency





DDMP - Compact efficiency

Affordable EC technology for compact fans

DDMP combines the High Efficiency EC technology with a compact fan ideal for application where space is at a premium.

Our new direct-driven centrifugal fan DDMP already exceeds the strict 2015 limits of the ErP Directive and the next 2020 tier.

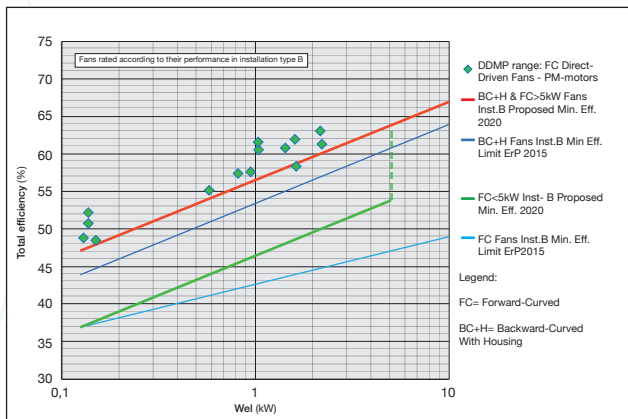
DDMP is built using a specifically designed PM motor combining high electrical efficiency with an optimized aerodynamic shape, perfect for double-inlet fans.

The new Nicotra-Gebhardt PM motors achieve IE5 efficiency levels.

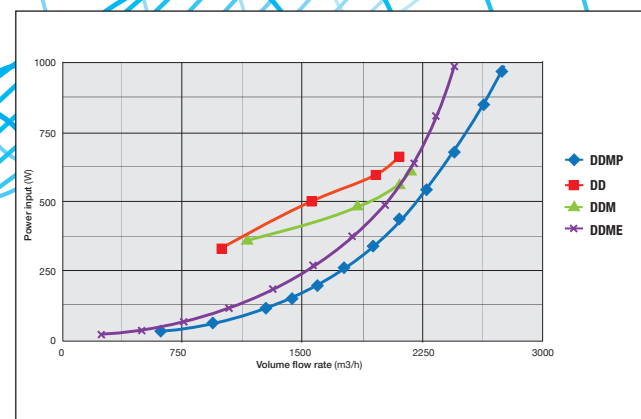
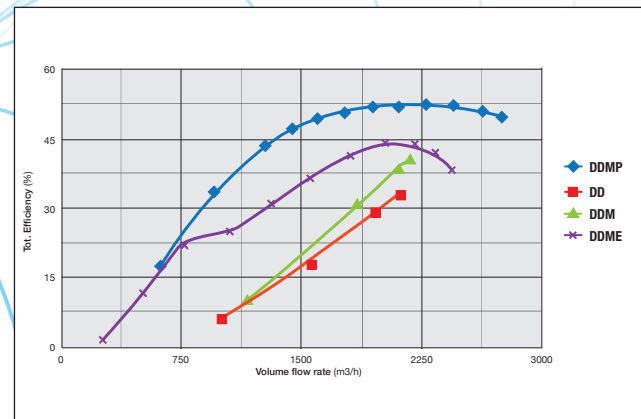
Low cost of ownership

DDMP is conceived to reduce all the five contributions to the life cycle cost of a fan:

- Purchase cost: engineered for high cost-effective production.
- Installation cost: one-piece, plug and play, drop-in unit.
- Maintenance cost: no recursive belt maintenance of direct-driven solution.
- Energy cost: halves the power consumption compared with old technical solutions.
- Disposal cost: minimum usage of not-recyclable materials.



ErP 2020 is approaching: DDMP is Ready



Effect of changing volume flow rate by adjustment of fan speed using different motor technologies

Technical features

All fan components are specifically designed to achieve the best integrated product.

- "one-piece" integrated solution.
- top-rating efficiency.
- plug and play operation.
- no configuration needed.
- low sound level.
- high reliability.

General features

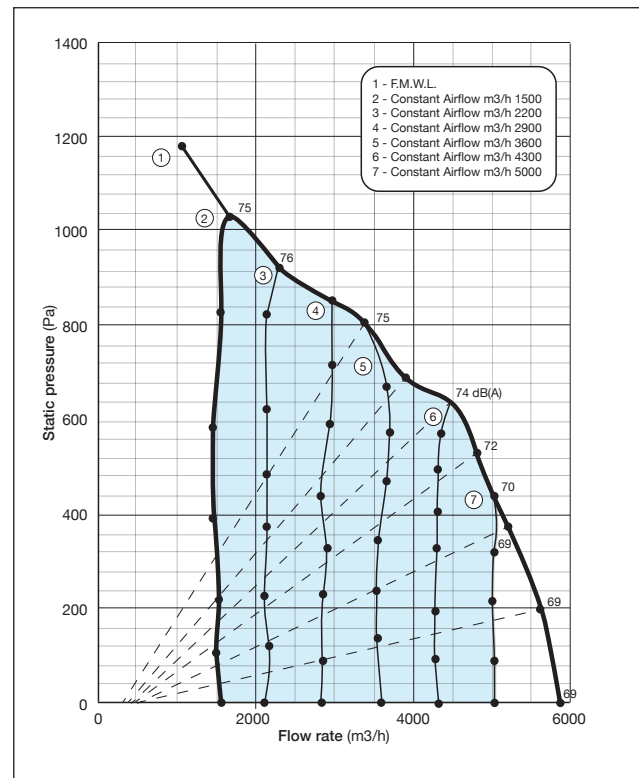
- sensor-less control.
- simple installation due to plug and play design.
- complete drive system IP 54.
- designed for double inlet fans.
- Constant-flow functionality.
- C1 EMC compliancy on all range.

Interface

- analogue interface for speed control.
- daisy chain connectivity.
- master-slave function.
- full MODBUS interface compliancy.

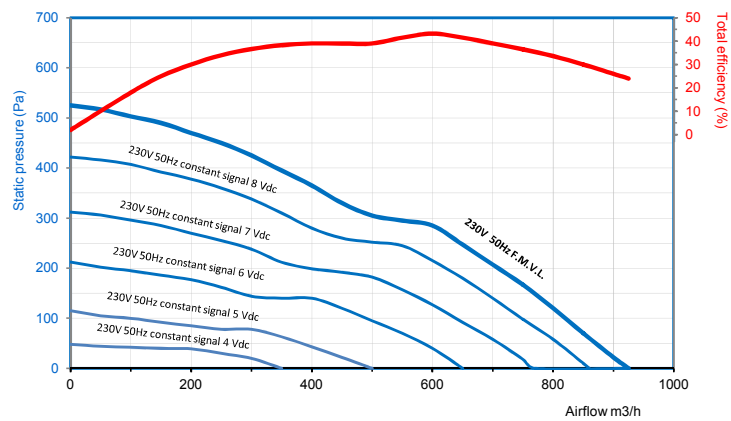
Energy saving concept

- new high efficiency permanent magnet motor.
- new compact and streamlined motor design.
- high intensity neodymium magnets.
- no obstruction of intake due to built-on control unit - less aerodynamic losses.

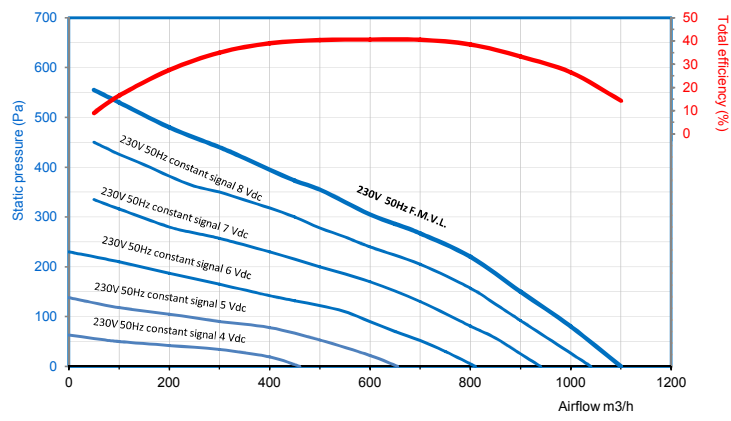


Example of constant-volume automatic control

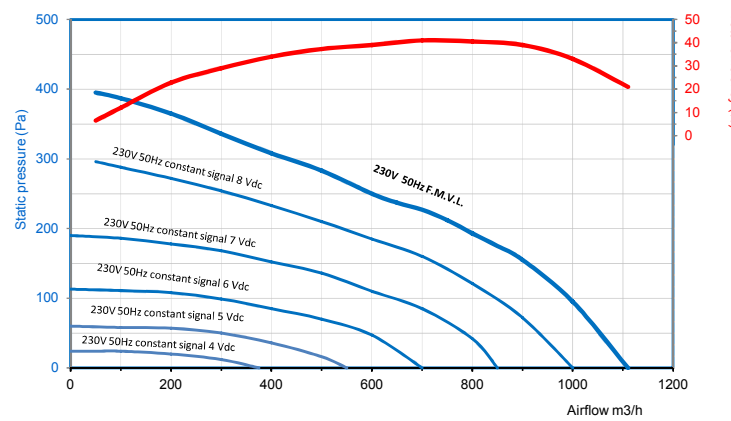
DDMP 133/126 7725M3+FL+DRIVER - 6M04L0



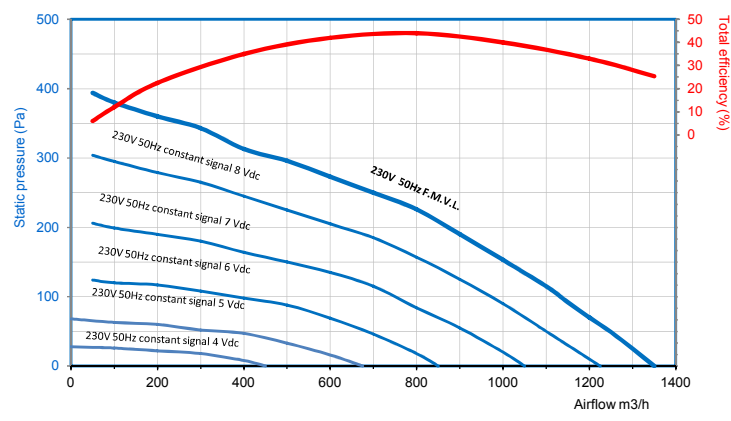
DDMP 133/190 7725M3+FL+DRIVER - 6M04L1



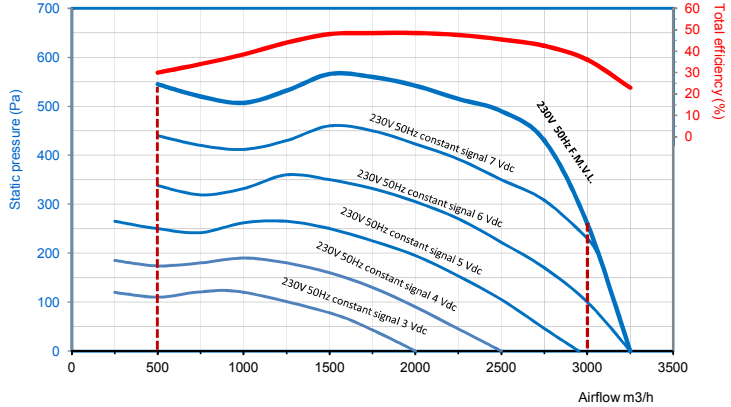
DDMP 146/190 7725M5+FL+DRIVER - 6M04L2



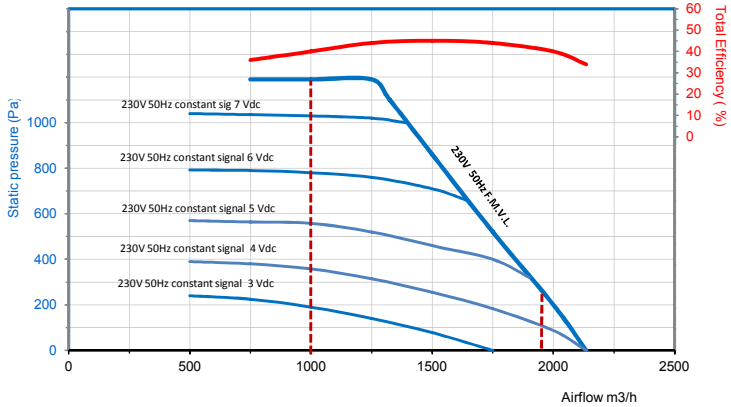
DDMP 146/190 SAE 7725M5+FL+DRIVER - 6M04L3



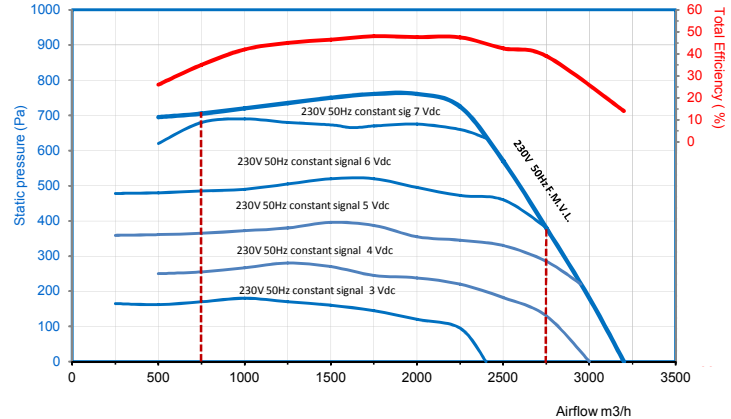
DDMP 7/7 1416A0+DRIVER - 6M04A0
Constant airflow programmable from 500 to 3000 m3/h



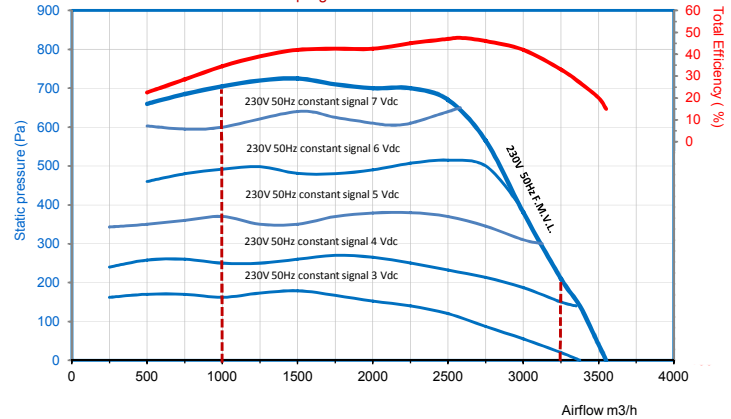
DDMP 7/7 T 1416A3+DRIVER - 6M04A7-6M04A8
Constant airflow programmable form 1000 to 1950 m3/h



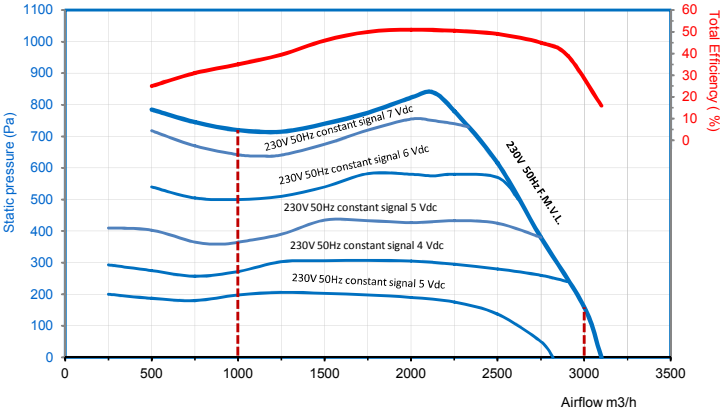
DDMP 8/7 T 1416A0+DRIVER - 6M04A5
Constant airflow programmable from 750 to 2750 m3/h



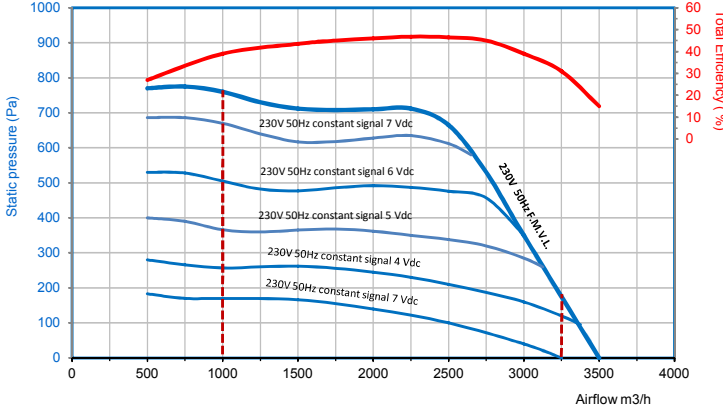
DDMP 8/9 T 1416A1+DRIVER - 6M04A6
Constant airflow programmable from 1000 to 3250 m3/h



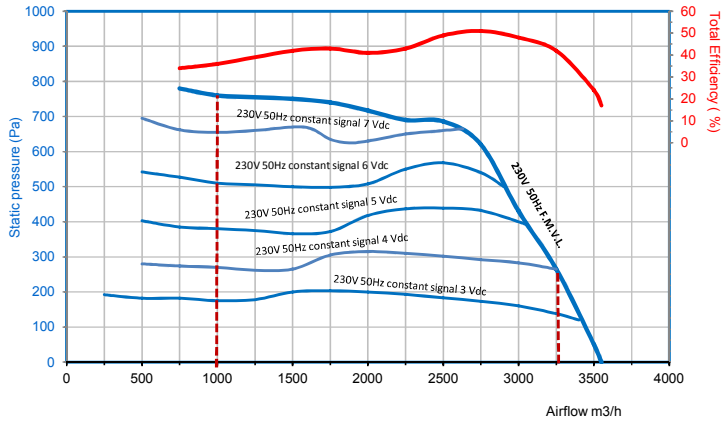
DDMP 9/7 1416A0+DRIVER - 6M04A1
Constant airflow programmable from 1000 to 3000 m3/h



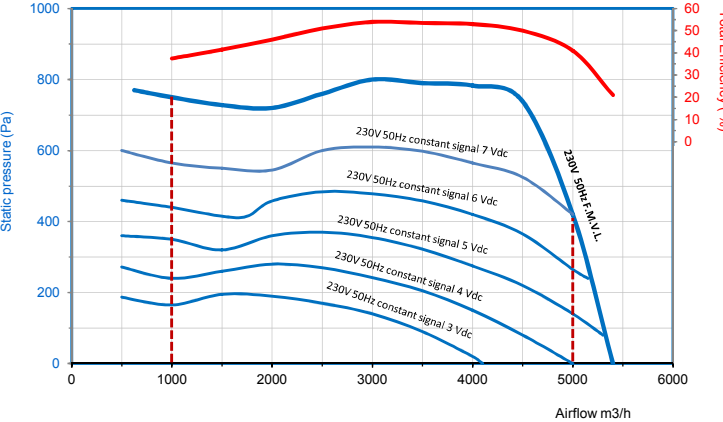
DDMP 225/240 1416A1+DRIVER - 6M04A9
Constant airflow programmable from 1000 to 3250 m3/h



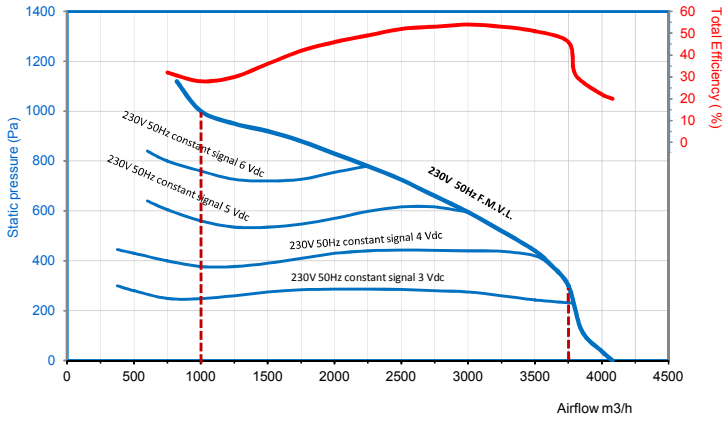
DDMP 9/9 1416A1+DRIVER - 6M04A2
Constant airflow programmable from 1000 to 3250 m3/h



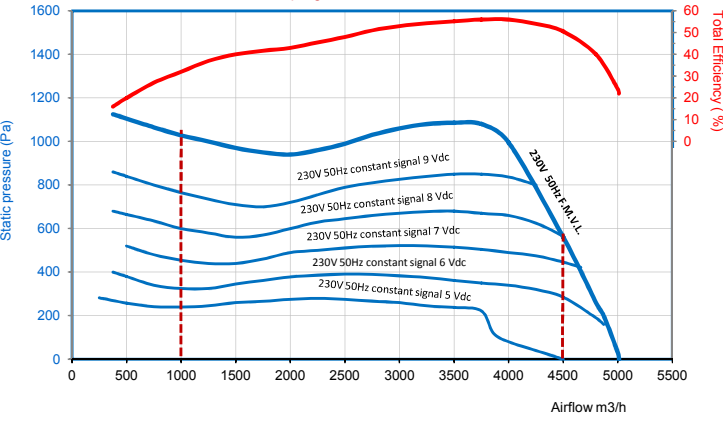
DDMP 9/9 1416A4+DRIVER - 6M04H0
Constant airflow programmable from 1000 to 5000 m3/h



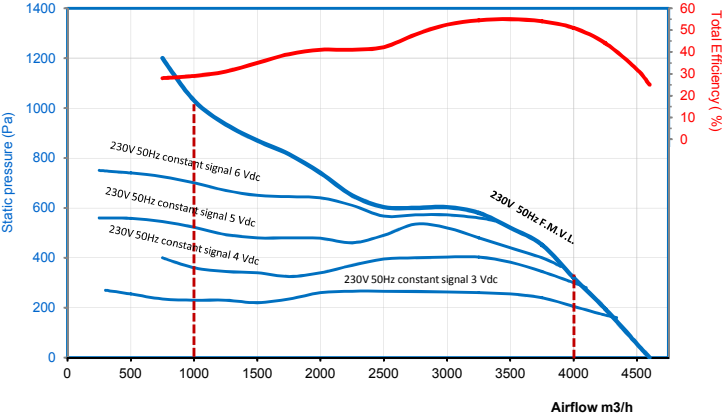
DDMP 10/8 1416A2+DRIVER - 6M04A3
Constant airflow programmable from 1000 to 3750 m3/h



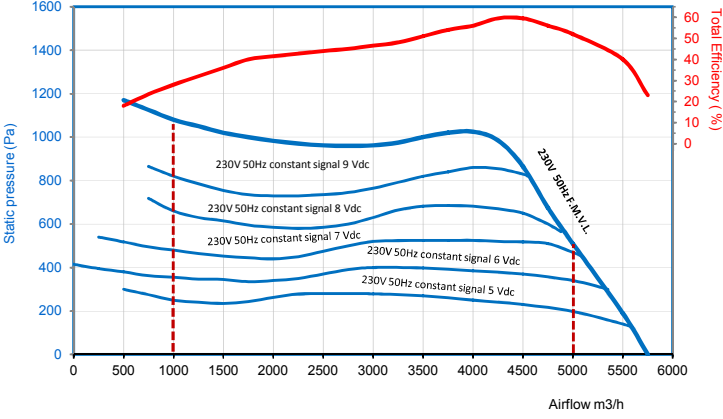
DDMP 10/8 1416A4+DRIVER - 6M04H1
Constant airflow programmable from 1000 to 4500 m3/h

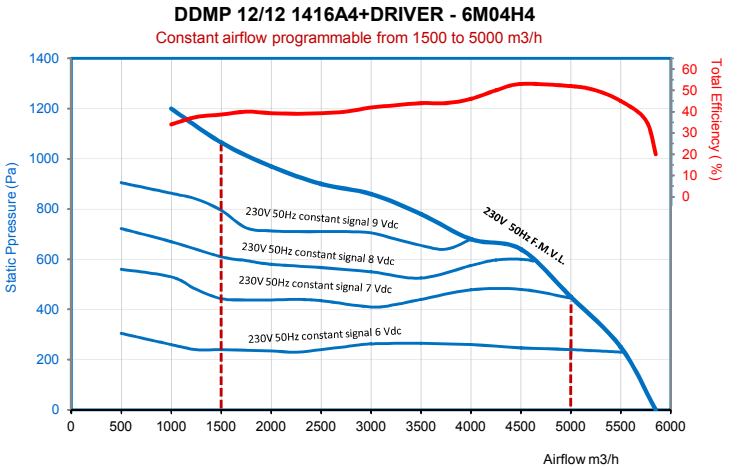
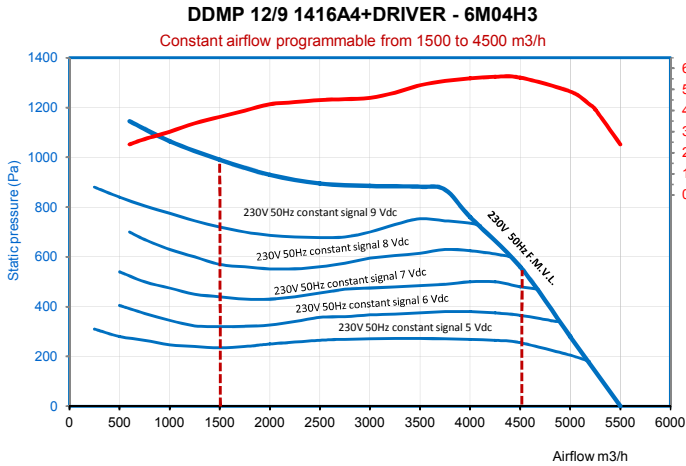


DDMP 10/10 1416A2+DRIVER - 6M04A4
Constant airflow programmable from 1000 to 4000 m3/h



DDMP 10/10 1416A4+DRIVER - 6M04H2
Constant airflow programmable from 1000 to 5000 m3/h

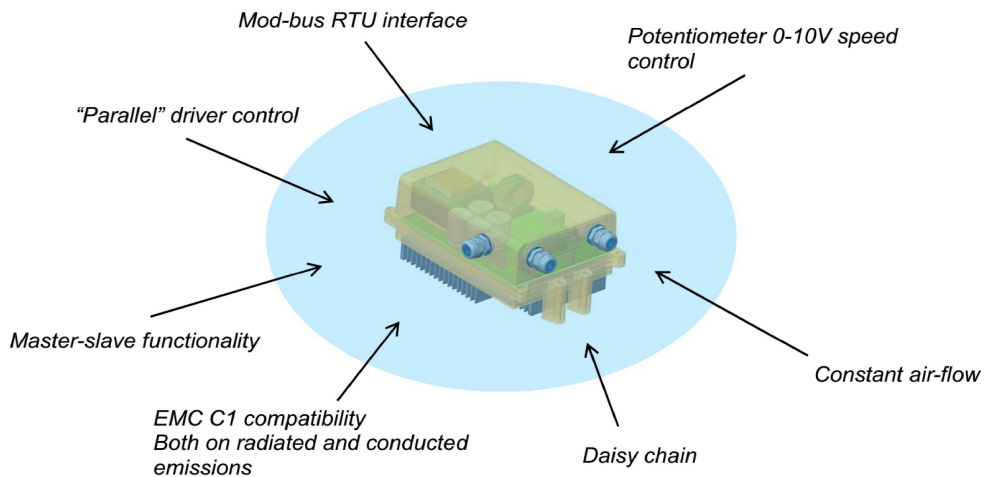
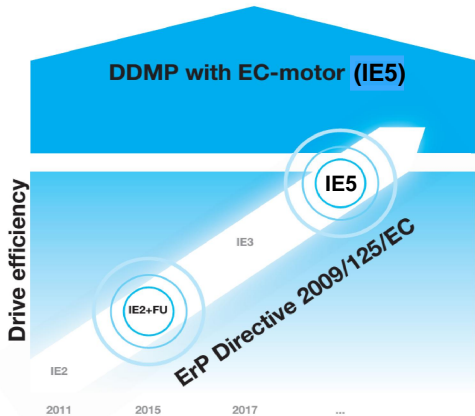




NICOTRA

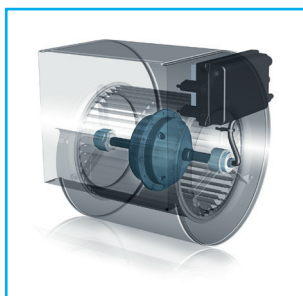
Gebhardt

Code	Description	W	IP	Max. A	Insulation class	Analog input 0-10V for speed control	Integrated analogue interface 0-10V	Tachometric output checks.	Modbus RTU interface	Master-slave functionality	Constant air-flow	Efficiency category	Measurement category	Overall efficiency (%)	Efficiency Grade N/FMEG	Estatus EpP	Variable speed drive	Rated motor power (Kw)	Flow rate (m3/s)	Pressure increase (Pa)	Speed (rpm)	Specific ratio
6M04L0	DDMP 133/126 7725M3+FL+DRIVER	110	20	1,26	B	●		●				Total	B	49,40	61,20	ErP2015	Integrated	0,1350	0,1634	355,32	2.458	1,0035
6M04L1	DDMP 133/190 7725M4+FL+DRIVER	123	20	1,39	B	●		●				Total	B	47,10	58,70	ErP2015	Integrated	0,1470	0,1893	319,09	2.374	1,0032
6M04L2	DDMP 146/190 7725M5+FL+DRIVER	155	20	1,25	B	●		●				Total	B	47,30	59,20	ErP2015	Integrated	0,1300	0,1959	273,40	1.939	1,0027
6M04L3	DDMP 146/190 SAE 7725M5+FL+DRIVER	155	20	1,33	B	●		●				Total	B	50,60	62,40	ErP2015	Integrated	0,1350	0,2169	274,32	1.903	1,0027
6M04A0	DDMP 7/7 1416A0 + DRIVER	400	44	4,60	F		●	●	●	●	●	Total	B	53,50	61,30	ErP2015	Integrated	0,5790	0,4550	616,84	1.997	1,0061
6M04A7	DDMP 7/7 TIG. RD 1416A3 + DRIVER	400	44	4,59	F		●	●	●	●	●	Total	B	49,10	55,50	ErP2015	Integrated	0,9610	0,4102	1.056,93	2.676	1,0105
6M04A8	DDMP 7/7 TIG. LG 1416A3 + DRIVER	400	44	4,59	F		●	●	●	●	●	Total	B	49,10	55,50	ErP2015	Integrated	0,9610	0,4102	1.056,93	2.676	1,0105
6M04A5	DDMP 8/7 TIGHT 1416A0 + DRIVER	400	44	4,60	F		●	●	●	●	●	Total	B	53,00	59,80	ErP2015	Integrated	0,8290	0,4994	804,08	1.998	1,0080
6M04A1	DDMP 9/7 1416A0 + DRIVER	400	44	4,60	F		●	●	●	●	●	Total	B	55,80	62,70	ErP2015	Integrated	0,8130	0,5016	825,81	1.998	1,0082
6M04A6	DDMP 8/9 TIGHT 1416A1 + DRIVER	400	44	4,60	F		●	●	●	●	●	Total	B	51,50	57,70	ErP2015	Integrated	1,0480	0,7240	685,54	1.839	1,0068
6M04A9	DDMP 225/240 1416A1+DRIVER	400	44	4,48	F		●	●	●	●	●	Total	B	51,20	57,40	ErP2015	Integrated	1,0440	0,6543	751,13	1.973	1,0074
6M04A2	DDMP 9/9 1416A1 + DRIVER	400	44	4,60	F		●	●	●	●	●	Total	B	55,90	62,40	ErP2015	Integrated	0,9490	0,7787	625,42	1.632	1,0062
6M04H0	DDMP 9/9 1416A4+DRIVER	2200	44	9,52	F		●	●	●	●	●	Total	B	59,00	64,40	ErP2015	Integrated	1,4270	0,8930	877,09	1.986	1,0087
6M04A3	DDMP 10/8 1416A2 + DRIVER	800	44	4,60	F		●	●	●	●	●	Total	B	58,90	65,10	ErP2015	Integrated	1,0310	0,8275	675,04	1.459	1,0067
6M04H1	DDMP 10/8 1416A4+DRIVER	2200	44	9,42	F		●	●	●	●	●	Total	B	59,50	63,60	ErP2015	Integrated	2,2080	1,0393	1.190,83	1.964	1,0118
6M04A4	DDMP 10/10 1416A2 + DRIVER	800	44	4,60	F		●	●	●	●	●	Total	B	59,80	66,10	ErP2015	Integrated	1,0290	0,9383	603,32	1.367	1,0060
6M04H2	DDMP 10/10 1416A4 + DRIVER	2200	44	9,53	F		●	●	●	●	●	Total	B	61,20	65,40	ErP2015	Integrated	2,1630	1,2213	1.020,48	1.801	1,0101
6M04H3	DDMP 12/9 1416A4 + DRIVER	2200	44	7,29	F		●	●	●	●	●	Total	B	60,10	65,10	ErP2015	Integrated	1,5860	1,1761	755,38	1.309	1,0075
6M04H4	DDMP 12/12 1416A4 + DRIVER	2200	44	7,49	F		●	●	●	●	●	Total	B	56,60	61,60	ErP2015	Integrated	1,6230	1,2420	690,18	1.296	1,0068



EC- and permanent magnet motors for all applications

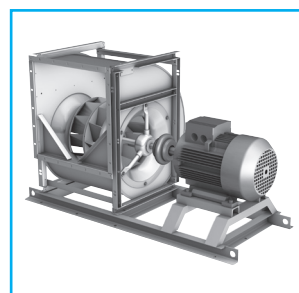
Direct driven centrifugal fans DDMP with permanent magnet motor



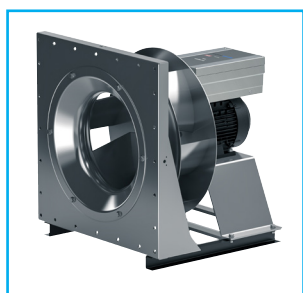
Direct driven centrifugal fans RDP with permanent magnet motor



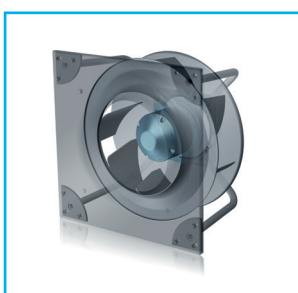
Direct driven centrifugal fans RZM with permanent magnet motor



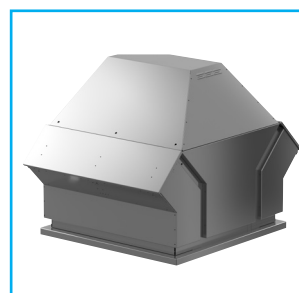
Plug fans RLM with permanent magnet motor



Plug fans PFP with permanent magnet motor



Roof extract fans RDME with permanent magnet motor



NICOTRA | **Gebhardt**
fan|tastic solutions

Nicotra Gebhardt Germany

Nicotra Gebhardt GmbH
Gebhardtstraße 19-25
74638 Waldenburg
Germany
Phone +49 (0)7942 101 0
Fax +49 (0)7942 101 170
E-mail info@nicotra-gebhardt.com

Nicotra Gebhardt Italy

Nicotra Gebhardt S.p.A.
Via Modena, 18
24040 Zingonia (BG)
Italy
Phone +39 035 873 111
Fax +39 035 884 319
E-mail info@nicotra-gebhardt.com

CBI®
Master of the winds

Industrie CBI

Via della Taccona, 77
20900 Monza (MB)
Italy
Phone +39 039 7394 1
Fax +39 039 7371 25
E-mail info@industriecbi.it

